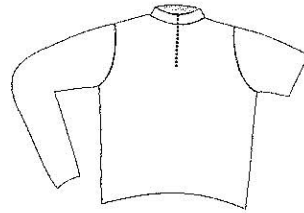


Club Name



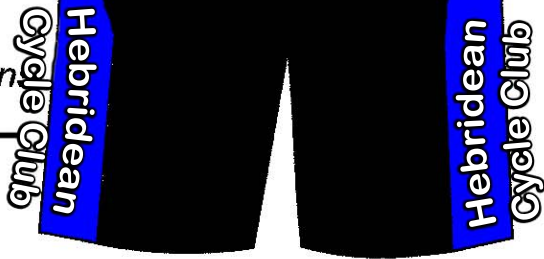
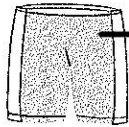
DESIGN SHEET



Most tops will be produced with raglan sleeves and side panels (main design). However if better suited to your design we can produce winged (no side panels) and/or set-in (as opposed to raglan) as shown above. We will allow the designer to dictate whichever version is best suited and take care of this for you.

Note: Try to keep any important design elements as far away from seam lines as possible as matching over seams is difficult when replacing garments of varied sizes and sizes.

Shorts colour option



Coloured "Short Body"

A1 - Black		+£0
E4 - Blue		+£3
D4 - Blue		+£3
B4 - Blue		+£3
A4 - Blue		+£3
C5 - Green		+£3
C1 - Grey		+£3
A3 - Red		+£3
D3 - Purple		+£3



Club Badge to be printed on sleeves

Shorts panel options



Side Panel



+£0



Side Panel & Rear Panel



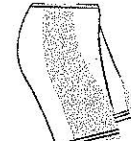
+£3



U-panel



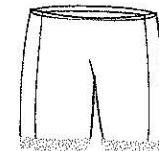
+£3



Wrap Around Side Panels



+£3



Leg band



+£3

Text to be printed on rear of U-panel
hebrideancycleclub.com